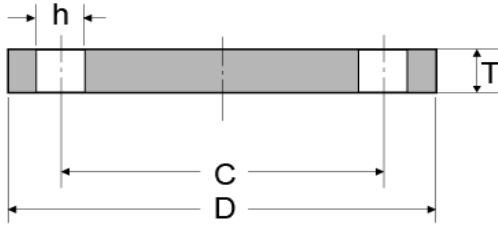


EN1092-1 PN10 Blind Flanges Type 5



Rated Diameter	Flange			Screws Parameter			Approx Weight per Piece KG
	Dia of Bolt Circle	O.D.	Thk. of Flange	Dia of Bolt Holes	Thread	Number of Bolt Holes	
	C	D	T	h		n	
15	55	80	12	11	M10	4	0,438
20	65	90	14	11	M10	4	0,657
25	75	100	14	11	M10	4	0,821
32	90	120	14	14	M12	4	1,180
40	100	130	14	14	M12	4	1,390
50	110	140	14	14	M12	4	1,620
65	130	160	14	14	M12	4	2,140
80	150	190	16	18	M16	4	3,430
100	170	210	16	18	M16	4	4,220
125	200	240	18	18	M16	8	6,100
150	225	265	18	18	M16	8	7,510
200	295	340	24	22	M20	8	16,500
250	350	395	26	22	M20	12	24,100
300	400	445	26	22	M20	12	30,800
350	460	505	26	22	M20	16	39,600
400	515	565	26	26	M24	16	49,400
450	565	615	28	26	M24	20	63,000
500	620	670	28	26	M24	20	75,200
600	725	780	34	30	M27	20	124,000
700	840	895	38	30	M27	24	183,000
800	950	1015	48	33	M30	24	297,000
900	1050	1115	50	33	M30	28	374,000
1000	1160	1230	54	36	M33	28	492,000
1200	1380	1455	66	39	M36	32	842,000